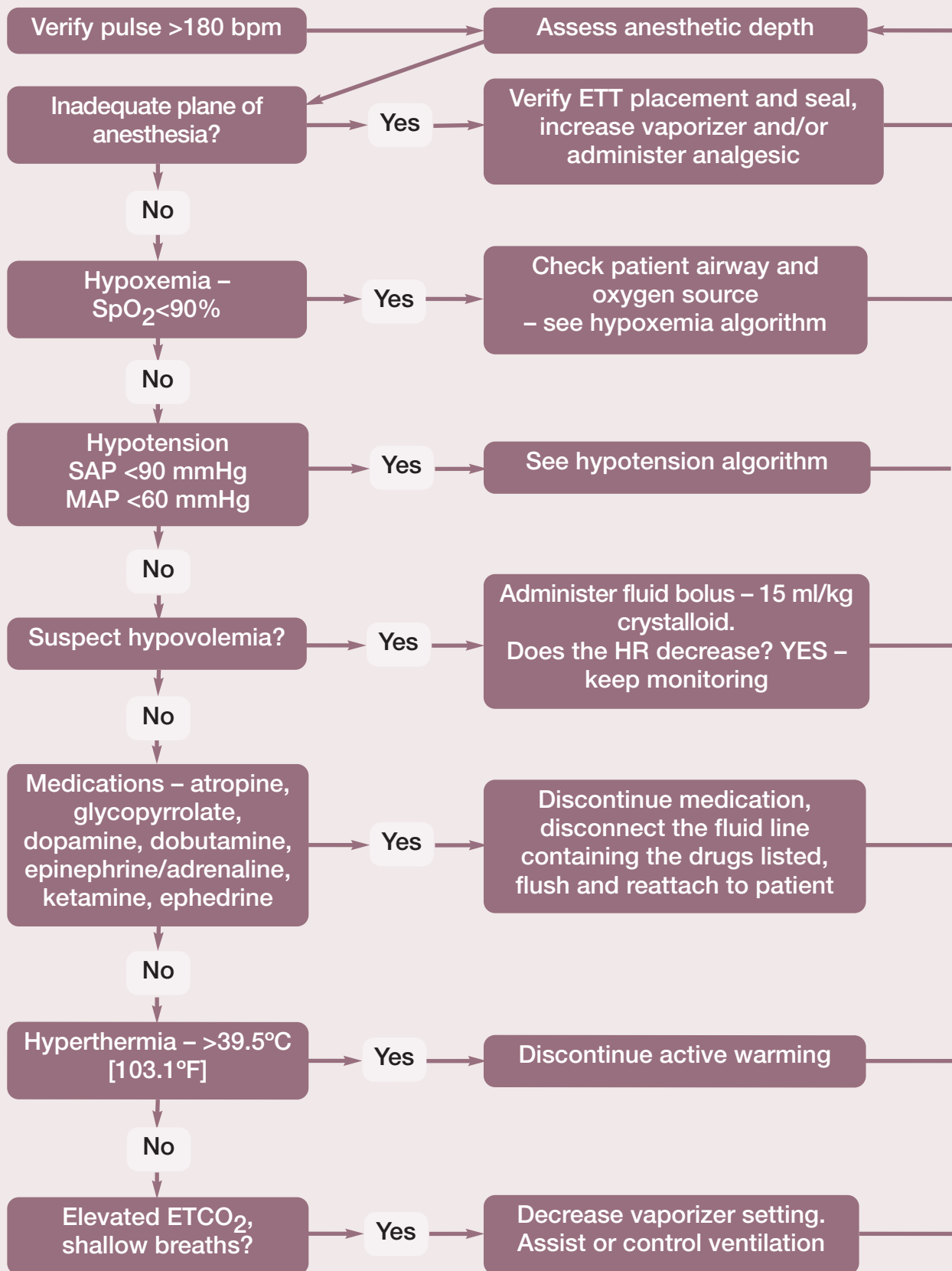


Troubleshooting tachycardia



This algorithm is from the AAFP Feline Anesthesia Guidelines, published in *JFMS* in July 2018 and available at catvets.com/guidelines

Key ETCO₂ = end-tidal carbon dioxide; ETT = endotracheal tube; MAP = mean arterial pressure; SAP = systolic arterial pressure; SpO₂ = oxygen saturation of hemoglobin in arterial blood